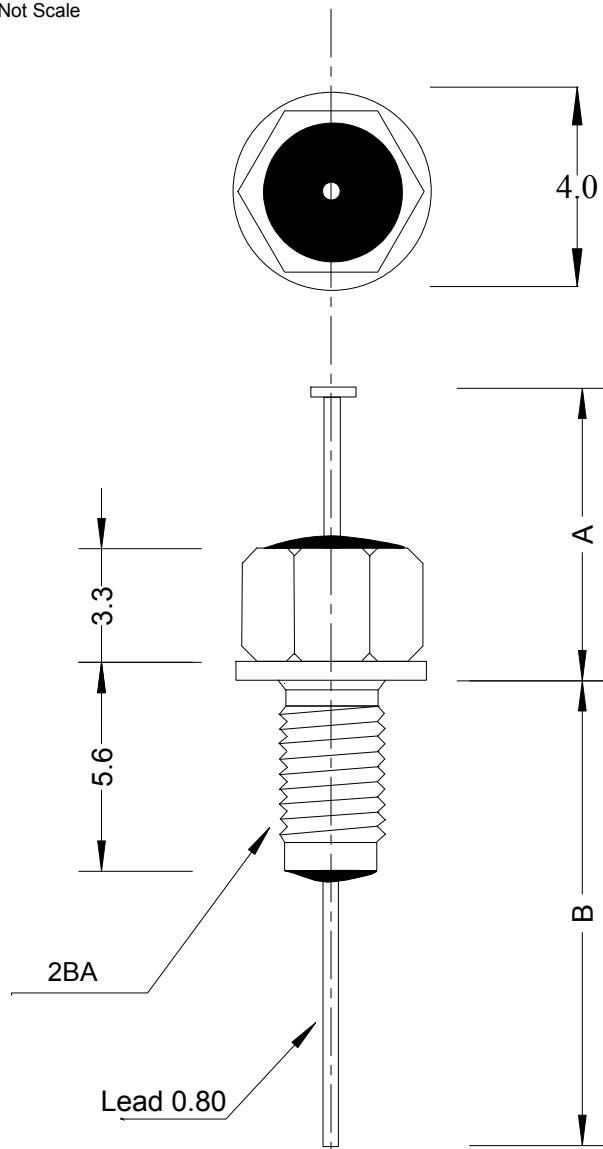


Do Not Scale

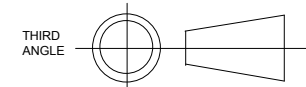
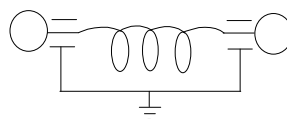


Capacitance Tolerance	min 3000pF
Environmental Classification	55/125/56
Dissipation	<4%
Rated Working Voltage	300VDC
Withstanding Voltage	1000VDC 1min
Current Rating	10A max
I.R. @ 100VDC	>5Gohm
Operating Temp Range	-55°C to +125°C
Bushing Matl	Ag plated Brass
Lead Matl	Tin plated Cu

Attenuation	
10MHz	20dB
100MHz	60dB
1GHz	70dB
10GHz	70dB

Tolerance +/-0.75		
	001	002
A	7.5	29
B	24.5	31

Circuit Diagram



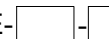
Soldering conditions 300°C for 5s max

Recommended installation torque:
0.6Nm for clearance hole
0.3Nm for threaded hole

Clearance mounting hole dia 5.1+0.2/-0

Ordering Info

FS-P3000-E-



Blank-no nut or lockwasher
NT-supplied with nut & lockwasher

001 or 002 (depending on lead length
required, see table opposite)

No part of this drawing may be
disclosed or copied without
written authority of the company

Filtek Solutions Ltd



Filtek Solutions

DRAWN

LR

DATE

26-2-2012

DIMENSION

mm

TOLERANCE

One decimal place +/-0.2mm
Two decimal places +/-0.05mm

TITLE

3000pF Feedthrough Pi Filter, 2BA

DRAWING NUMBER

FS-P3000-E

ISSUE

01