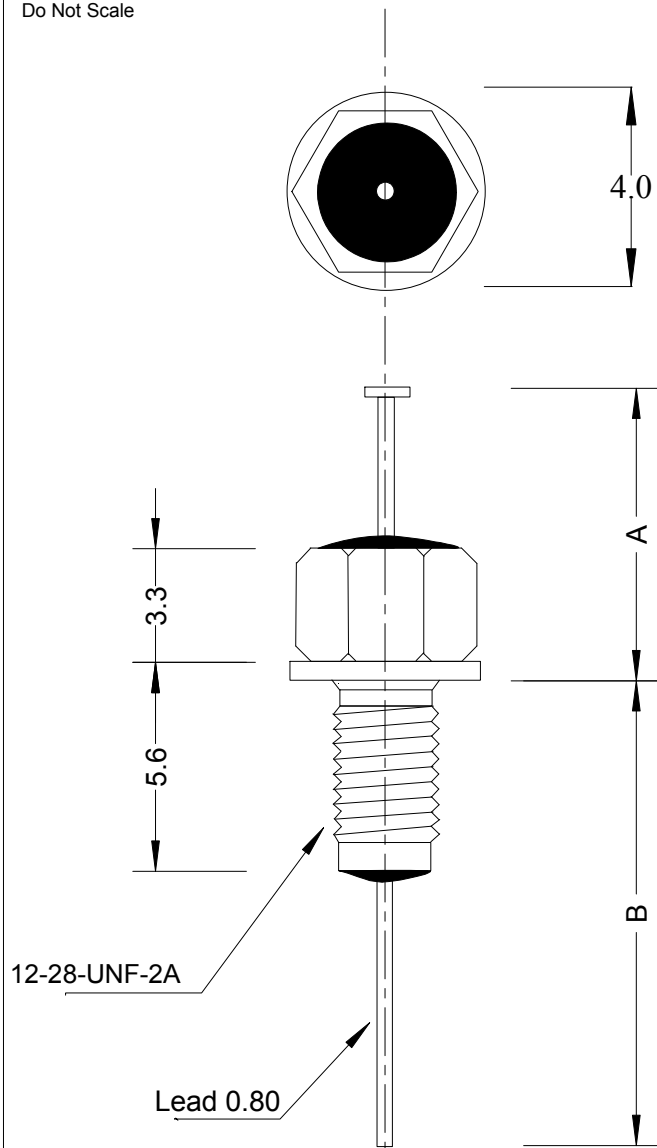


Do Not Scale

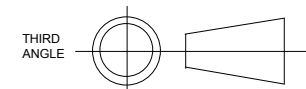
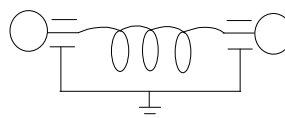


|                              |                 |
|------------------------------|-----------------|
| Capacitance Tolerance        | min 5500pF      |
| Environmental Classification | 55/125/56       |
| Dissipation                  | <4%             |
| Rated Working Voltage        | 300VDC          |
| Withstanding Voltage         | 1000VDC 1min    |
| Current Rating               | 10A max         |
| I.R. @ 100VDC                | >5Gohm          |
| Operating Temp Range         | -55°C to +125°C |
| Bushing Matl                 | Ag plated Brass |
| Lead Matl                    | Tin plated Cu   |
|                              |                 |

| Attenuation |      |
|-------------|------|
| 10MHz       | 20dB |
| 100MHz      | 68dB |
| 1GHz        | 70dB |
| 10GHz       | 70dB |

| Tolerance +/-0.75 |      |     |
|-------------------|------|-----|
|                   | 001  | 002 |
| A                 | 7.5  | 29  |
| B                 | 24.5 | 31  |

Circuit Diagram



Soldering conditions 300°C for 5s max

Recommended installation torque:  
0.6Nm for clearance hole  
0.3Nm for threaded hole

Clearance mounting hole dia 5.6+0.2/-0

#### Ordering Info

FS-P5500-D--

Blank-no nut or lockwasher  
NT-supplied with nut & lockwasher

001 or 002 (depending on lead length  
required, see table opposite)

No part of this drawing may be  
disclosed or copied without  
written authority of the company

Filtek Solutions Ltd



Filtek Solutions

DRAWN

LR

DATE

26-2-2012

DIMENSION

mm

TOLERANCE

One decimal place +/-0.2mm  
Two decimal places +/-0.05mm

TITLE

5500pF Feedthrough Pi Filter, 12-28-UNF-2A

DRAWING NUMBER

FS-P5500-D

ISSUE

01